

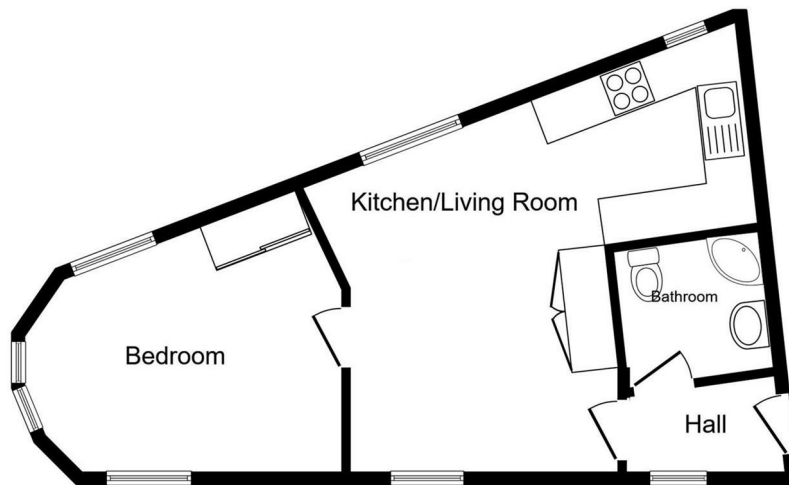
TO LET

Flat 2 The Triangle, Aldershot, Hampshire, GU11 1FR

£1,050 PCM



- First floor
- Modern throughout
- No Parking Included
- Close to station
- Council Tax Band A
- Open plan living space
- Double bedroom
- Town centre location
- Five Weeks' Deposit £1211.53
- EPC Energy Rating Band (D) 60



Floor Plan

This floor plan is for illustrative purposes only. It is not drawn to scale. Any measurements, floor areas (including any total floor area), openings and orientations are approximate. No details are guaranteed, they cannot be relied upon for any purpose and do not form any part of any agreement. No liability is taken for any error, omission or misstatement. A party must rely upon its own inspection(s). Powered by [www.Propertybox.io](http://www.Propertybox.io)

## THE PROPERTY

A beautifully presented first-floor apartment, finished to an impressively high standard and ideally positioned in the heart of Aldershot, is now available. This stylish home offers a spacious lounge, a well-appointed modern kitchen, a comfortable double bedroom, and a sleek contemporary bathroom, making it an excellent choice for anyone seeking quality and convenience.

This uniquely charming property is just moments from the mainline station, an array of local shops, cafés, and amenities, and enjoys a modern, contemporary feel throughout. Perfect for first-time buyers or commuters looking for an exceptional town-centre residence.

Please note, there is no parking included!

## SITUATION

## Directions